

Sensor Layout: Port of Longview CPT OSU-5 In-Situ Liquefaction Test

Brady R. Cox¹

Kenneth H. Stokoe¹, Julia Roberts¹

¹Department of Civil, Architectural and Environmental Engineering, The University of Texas, Austin, USA

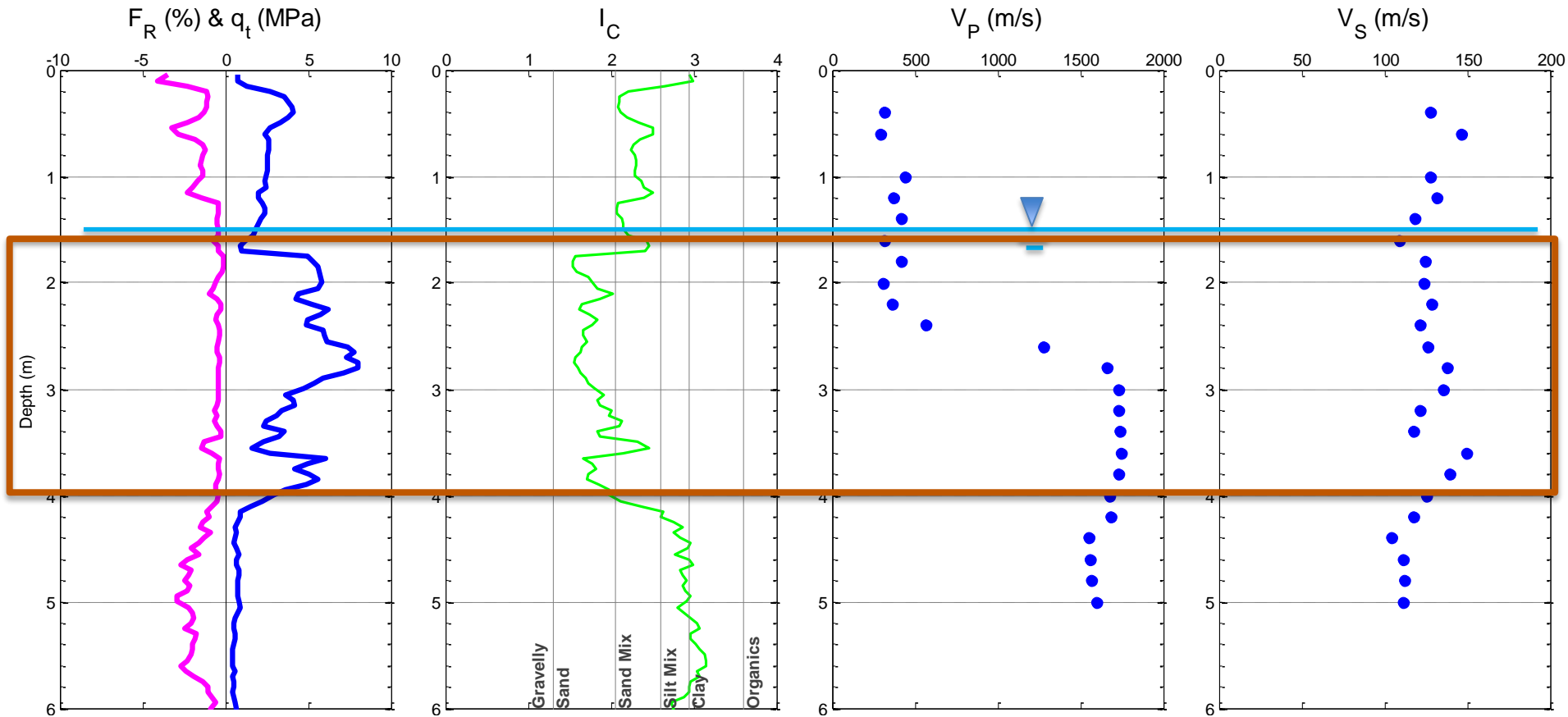


Longhorns

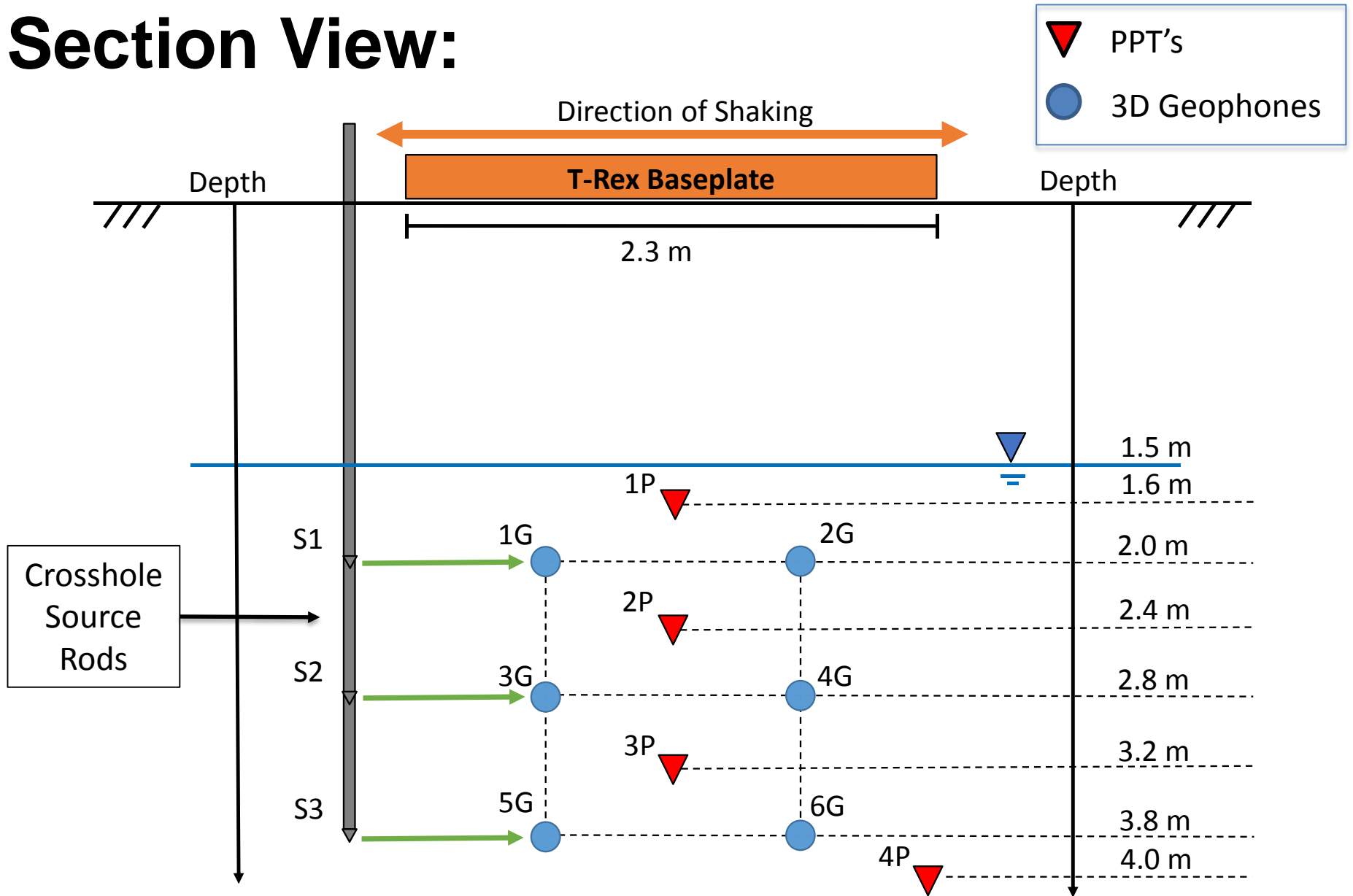
NHERI@Utexas In-Situ Liquefaction Workshop
Portland, Oregon; 23 June 2016



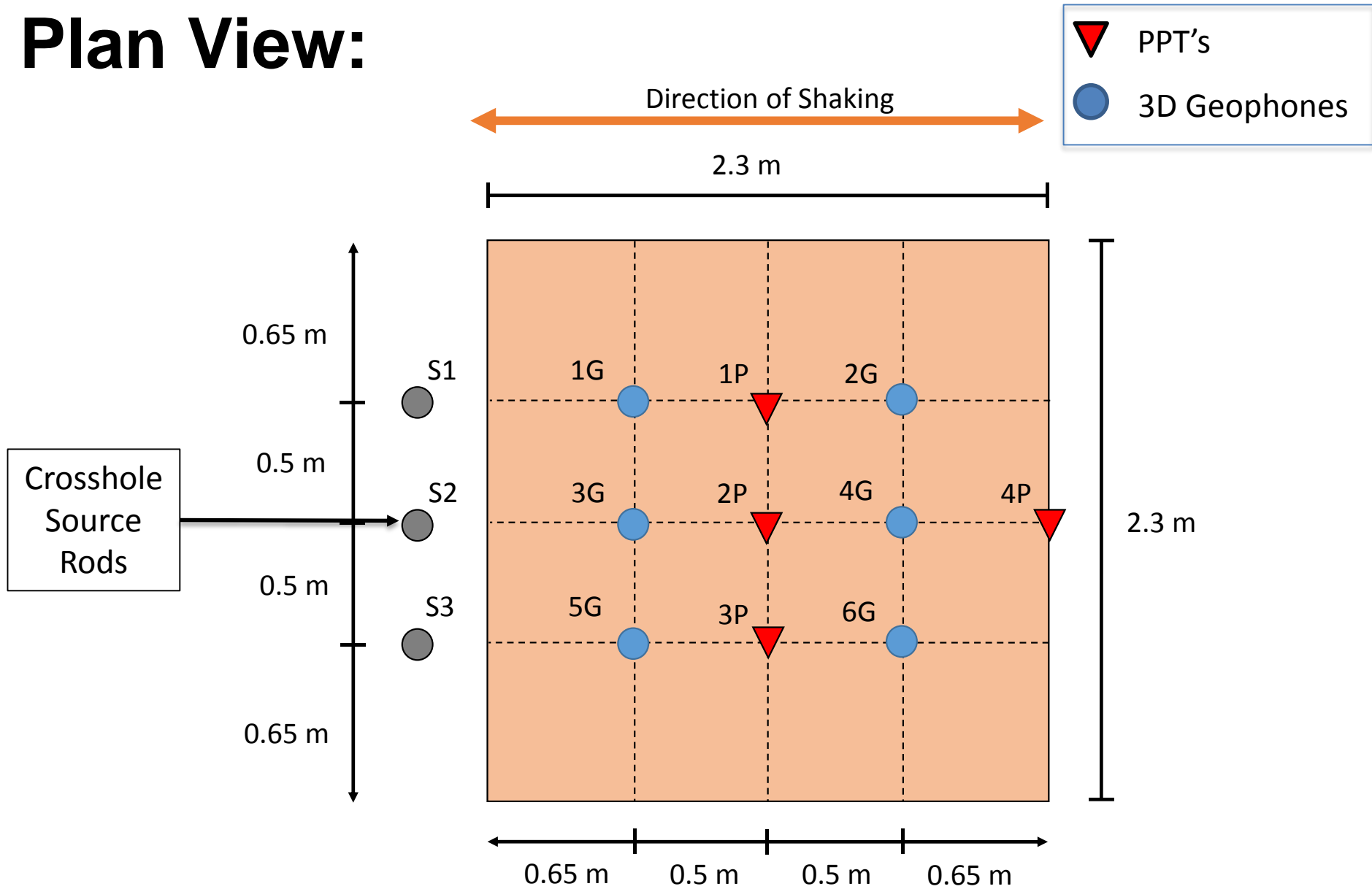
Instrumented Zone: OSU-5



Section View:



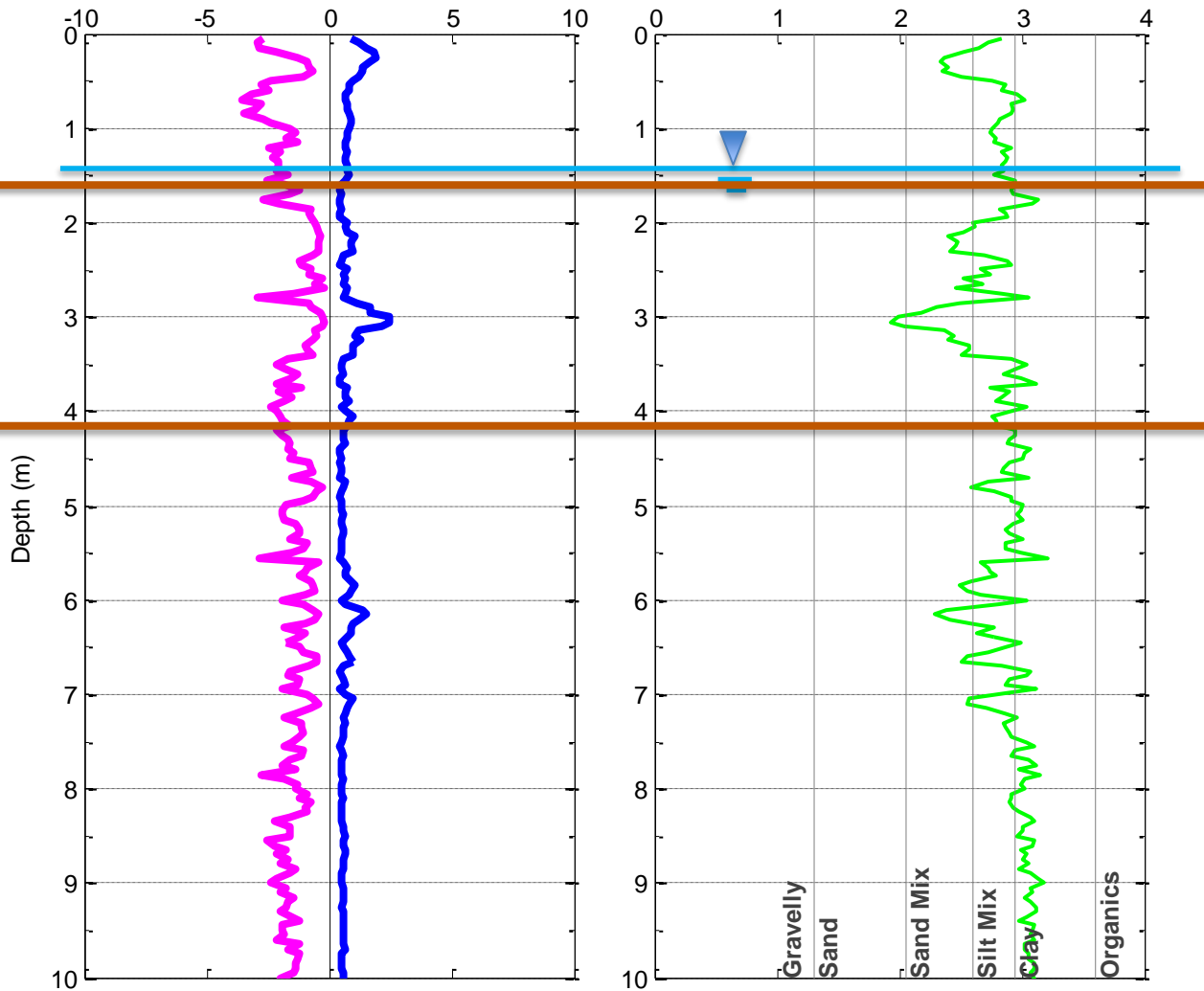
Plan View:



Plan for Instrumented Zone: OSU-1 (Silts)

F_R (%) & q_t (MPa)

I_C



No DPCH
Vp or Vs
Results
Yet

Questions?